

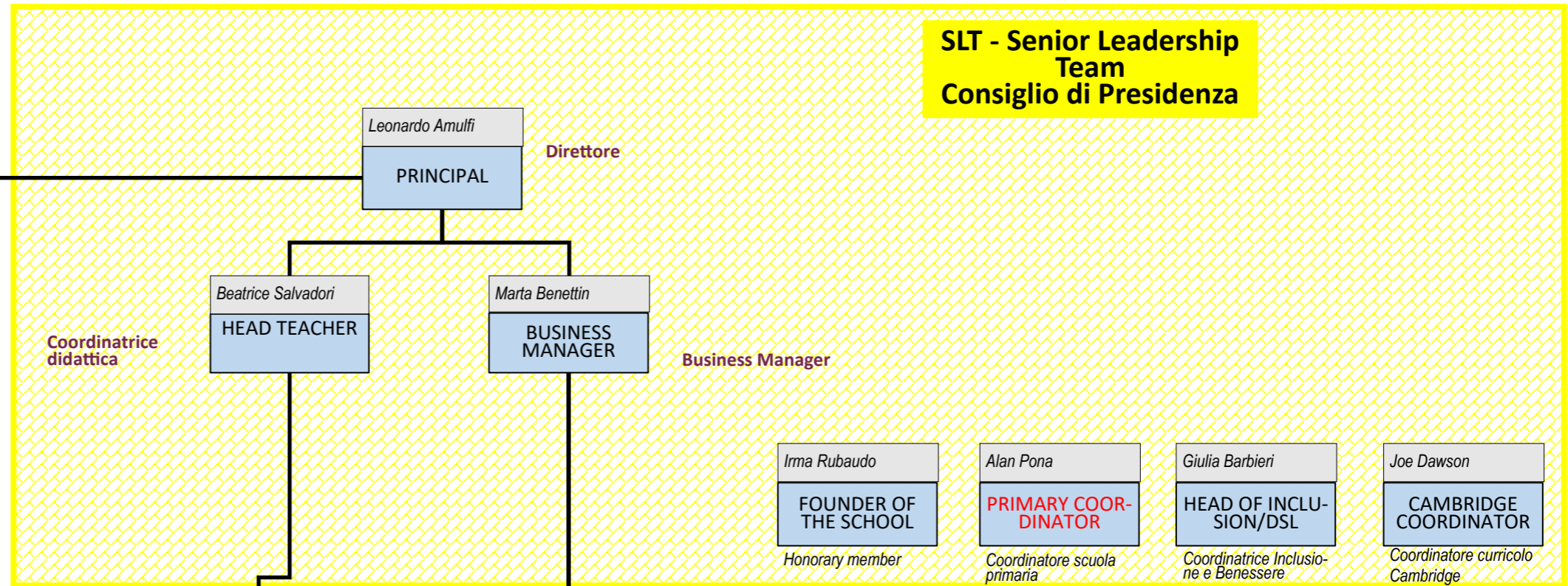


# ORGANISATION CHART

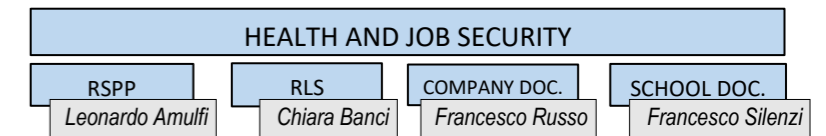
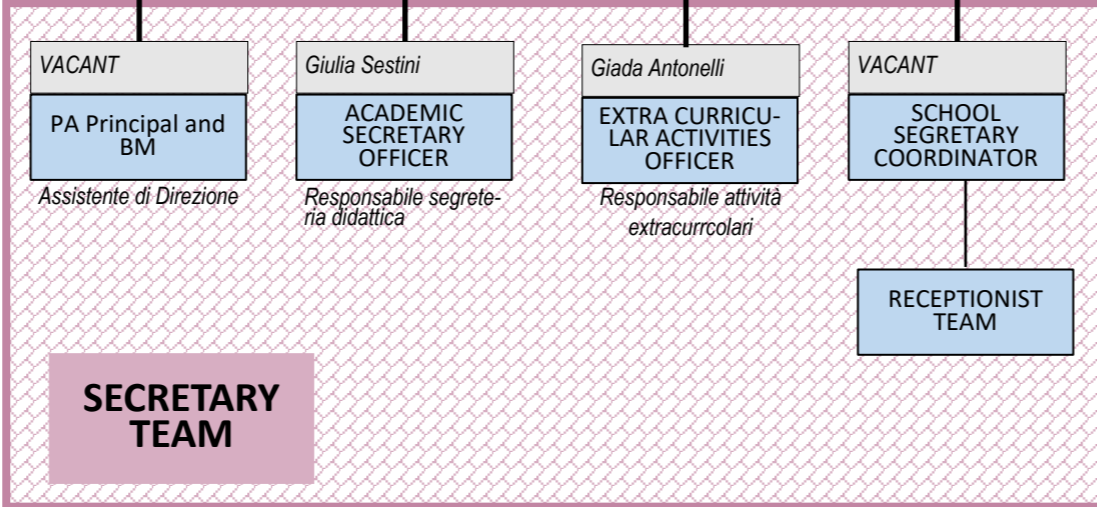
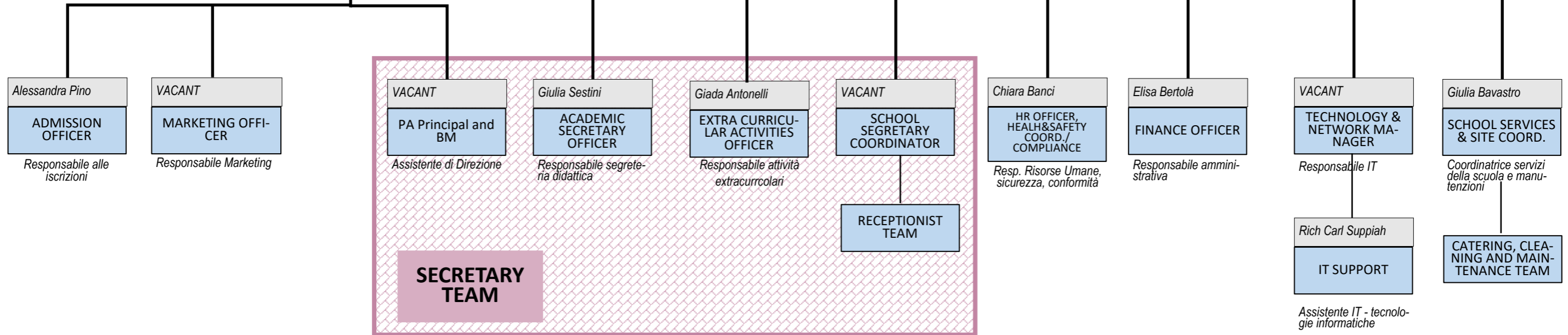
2021/22

Admin Area  
Area amministrativa

- L231/2001 Supervisory Board
- Collegio dei docenti
- Consiglio d'Istituto



- FOUNDER OF THE SCHOOL** (Honorary member): Irma Rubaudo
- PRIMARY COORDINATOR** (Coordinatore scuola primaria): Alan Pona
- HEAD OF INCLUSION/DSL** (Coordinatrice Inclusione e Benessere): Giulia Barbieri
- CAMBRIDGE COORDINATOR** (Coordinatore curricolo Cambridge): Joe Dawson





**ORGANISATION CHART**

**2021/22**

**Educational Area**  
Area educativa

